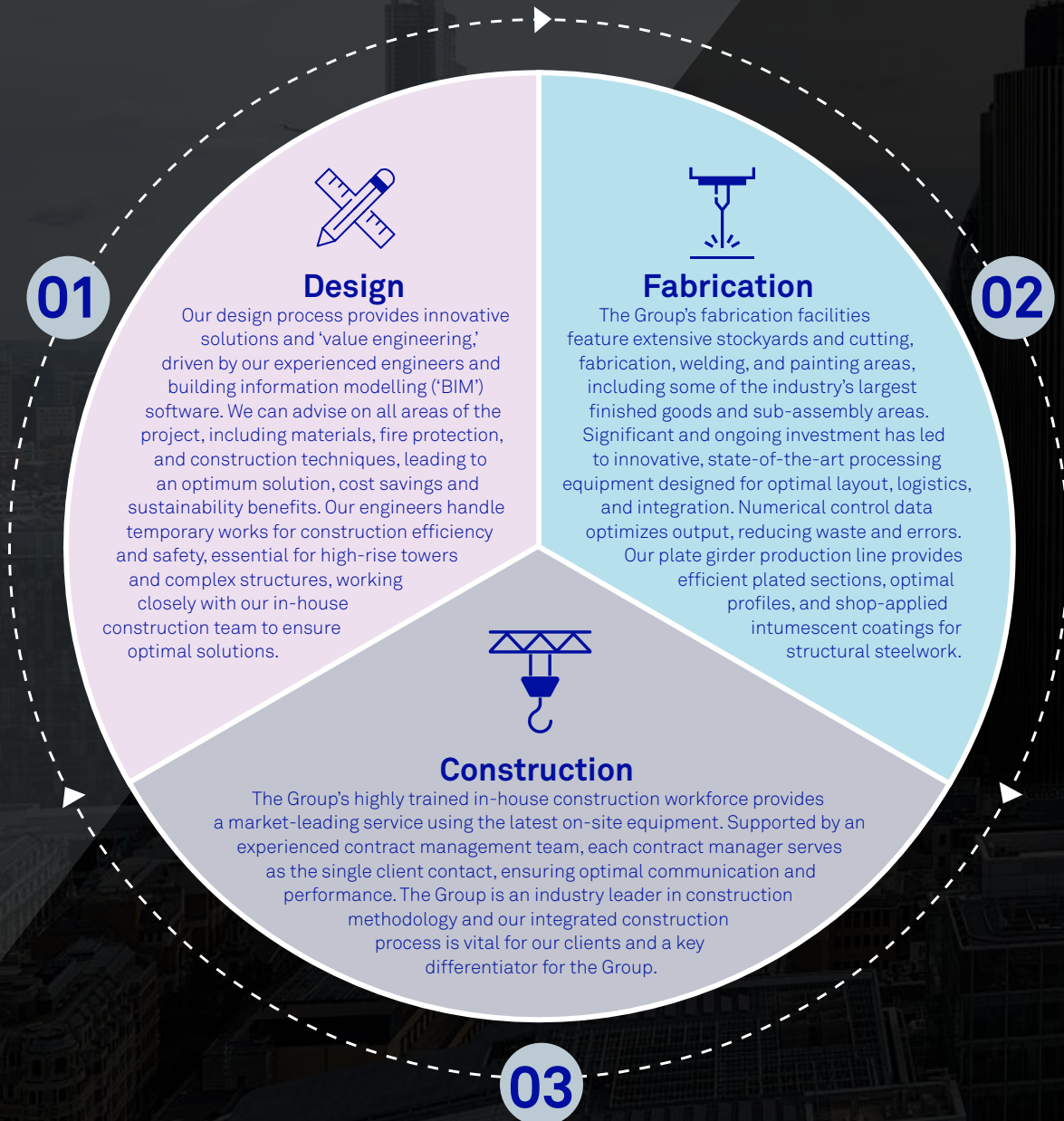


WHAT WE DO

We provide value throughout the entire project life cycle...

We manage every aspect of the fabrication and construction process, from initial scheme design, through detailing, specification and manufacture, to the eventual handover to our clients of a quality product on-site. By engaging with our clients in the design stage, we can add value throughout the project life cycle. Our in-house design and construction teams work closely together to create the most efficient and safest solutions that match our clients' needs.



Project Horizon

Over the years we have continued to invest in operational improvements, including the launch of Project Horizon, our digital transformation project, in 2023. This is a long-term business initiative that will support our strategy and help shape our future as we develop and enhance our systems and processes, to ensure we remain at the forefront of technology and innovation as market leader in the industry. The objective is to maximise the automation of our estimating, design, production and contract delivery processes to improve customer service and deliver efficiency and capacity benefits in the future.

...addressing societies' infrastructure needs

Our businesses are well-positioned to win work in markets with positive long-term growth trends including those which are benefiting from the green energy transition. At Severfield, we have significant experience in delivering a wide range of projects across the sectors that support this expected growth. The Group's manufacturing scale, speed of construction and on-time delivery capabilities, leaves us well-positioned to win work from such projects, many of which are likely to be designed in steel.

Battery plants

In the UK and EU, we are seeing a new wave of opportunities for battery gigafactories to support domestic zero carbon vehicle production, with a number of facilities currently being planned or considered. Recognising the importance of these facilities, governments in the UK and Europe are allocating funding to deliver globally competitive local battery supply chains. Severfield has a strong position in the sector and is currently working on the Envision battery plant in Sunderland.

Renewable energy

Decarbonising the power sector, whilst meeting a significant increase in electricity demand, has the potential to generate significant investment from both the private and public sectors. The UK currently has the largest operational offshore wind farm in Europe, with similar sized projects planned or underway. This presents opportunities for the Group including manufacturing facilities for renewables, offshore wind projects, onshore substations for wind connecting offshore energy to the grid and modular housings for offshore applications.

New nuclear

The UK Government has launched 'Great British Nuclear', to facilitate the design, construction, commissioning and operation of nuclear energy generation projects to address constraints in the nuclear market. The new Civil Nuclear Roadmap, published in January 2024, describes how the UK could meet its existing target to generate up to 24GW of nuclear power by 2050, 4 times the current capacity. Similar projects are also being planned in Europe. The Group has extensive experience in this sector and is a key delivery partner for existing nuclear projects at Sellafield.

Data centres

Demand for data centres in the UK and EU is also expected to continue, fueled by cloud computing, 5G and the recent advancement of Artificial Intelligence ('AI') applications which are driving even greater dependence on data centre infrastructure. The Group has a notable track record in this sector, having already delivered projects in the UK, Ireland, Belgium, Finland, the Netherlands and Germany for a variety of different end clients.

Transmission

In the UK, the National Grid's connection reform initiative is accelerating connections to the grid and similar projects are underway in the EU. The Group is well-placed to meet this demand which includes a significant increase in the volume of power transmission and distribution projects being brought to market, with an acceleration of work to strengthen and stabilise power networks to meet future energy demands.

Low carbon transport

Significant UK Government investment is planned in public transport, including HS2, Northern Powerhouse rail links, TransPennine upgrades, rail electrification projects and in improving roads, buses and railways in the north of England, all of which could also introduce new opportunities for the Group. Severfield is well placed in the infrastructure sector to support the delivery of such projects and our bridge team has a strong reputation and extensive experience in all types of bridgework, including major transport routes.

Low carbon buildings

Decarbonisation legislation and Net Zero targets are driving demand for low-carbon buildings, including modifications to existing buildings or new build projects. The Group has a strong track record in the commercial office sector, regionally and in London, as well as experience in 'cut and carve' (retrofit) design and construction, leaving us well placed to win work from these opportunities.

WHERE WE DO IT

Across our construction operations we provide unrivalled capacity, capability and technical expertise to the industry.

CORE CONSTRUCTION SECTORS



Commercial & Industrial

Our Commercial & Industrial division designs, fabricates and constructs structural steelwork for a variety of different sectors including commercial offices, stadia & leisure, industrial & distribution, data centres, retail and health and education.

The division has manufacturing sites in three locations: Dalton, Lostock and Enniskillen. Each has full-service capabilities and modern manufacturing processes enabling us to provide a high-quality product to a variety of different sectors. Each of our sites has its own strong reputation in the market and between them cover a wider geographical area, including Europe.

Voortman Steel Construction Holding B.V. ('VSCH') acquired April 2023 (Netherlands)

Acquired in April 2023, VSCH is headquartered in Rijssen, the Netherlands, and is a leading high-end steel construction company, with business activities in Europe. VSCH specialises in steel, industrial and energy construction, as well as design and build solutions. Over recent years, VSCH has transformed itself from a bulk steel constructor to a provider of high-end tailor-made steel solutions, produced in its cutting-edge manufacturing facilities.

- Dalton** **UK employees: 1,264**
- Sherburn** **Europe employees: 184**
- Lostock**
- Enniskillen, Northern Ireland**
- Zevenbergen, Netherlands**
- Rijssen, Netherlands**
- Maassluis, Netherlands**



Nuclear & Infrastructure

Across three locations, our Nuclear & Infrastructure division has extensive experience in the specialist, highly regulated nuclear, transport (road and rail), process industries and power and energy sectors. Providing award winning design teams, utilising state-of-the-art design software and Tekla detailing facilities to offer customers value engineering.

This gives a mix of proven success along with modern, innovative design and fabrication ideas to be able to provide a quality, specialised service to a growing market.

- Carnaby**
- Lostock**
- Cardiff**
- Glasgow**

Total employees: 197

The acquisition of VSCH, which has recently been combined with our existing European business, is strengthening our market position in Europe. Our joint venture operation in India is also fundamental in helping the Group achieve our strategic growth objectives.



Modular Solutions

The Modular Solutions division consists of the growing modular product ranges of Severfield Modular Solutions ('SMS') (formerly Severfield (Products & Processing) and of Construction Metal Forming ('CMF'), our cold rolled steel joint venture business.

Severfield Modular Solutions offers a market-leading suite of products, including an expanding range of modular products to cater to diverse needs, including 'Severstor' units (robust, steel-framed modules that house critical systems equipment such as electrical switchgear) and 'Rotoflo' technology (a well-established high-efficient and controlled discharge system representing a major advance in materials handling technology).

From its facility in Sherburn, it also provides a one-stop shop for steel products and processing service using our extensive range of equipment and allows us to address smaller scale projects.

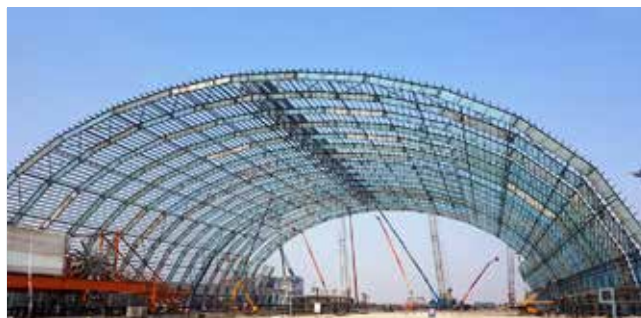
Construction Metal Forming, the Group's 50:50 joint venture in Monmouthshire, South Wales, is a specialist designer, manufacturer, innovator and installer of profiled MetFloor® metal decking. The modern manufacturing facility in South Wales houses three dedicated roll forming production lines, for the manufacture of MetFloor® metal decking. CMF has further expanded its product range to include cold formed products, the design and manufacture of steel purlins and certain modular products.

Sherburn

140 employees

Monmouthshire

89 employees



JSW Severfield Structures Limited (India)

The company, a 50:50 joint venture with JSW Steel (India's largest steel producer), which is situated in the district of Bellary, Karnataka, India, is involved in the design, fabrication and construction of structural steelwork to principally service the Indian market.

Its state-of-the-art facility consists of six standard (saw and drill) fabrication lines, two plate lines, smaller welded beam lines, bit shops and five bays, which provide bespoke off-line heavy fabrication, tubular products, specialised multi-coat painting and further bogey line fabrication. Off-line facilities are available to manufacture hand railing, stairs and other ancillary products.

The facility has been designed to optimise product range, quality and productivity, and incorporates cutting-edge technology and processing equipment. The Bellary facility has a capacity of c.100,000 tonnes (excluding subcontracted work).